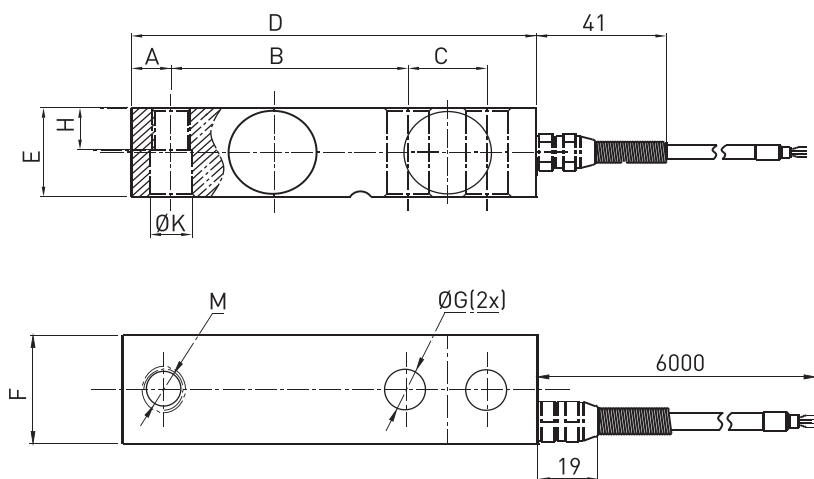


Size and Capacity



SIZE(mm)	A	B	C	D	E	F	G	H	K	M	Material	Weight
0.5/0.75/1/1.5/2/2.5	12.7	76.2	25.4	130	31.8	31.8	13	15.7	13.5	M12×1.75	Stainless steel	1.0kg
3/5	19	95.3	38.1	171.5	38.1	38.1	20	26	20	M18×1.5		1.9kg
7.5/10	25.3	124	50.8	225.5	50.8	50.8	27	25.4	26.2	M24×2	Alloy steel	4.5kg

Technical Parameters

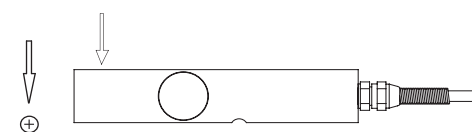
Specifications	Technique
Rated output	2.0 ± 1% mV/V 3.0 ± 1% mV/V (Option)
Zero balance	± 2% F.S.
Non-linearity	0.03% F.S. Alloy steel / 0.05% F.S. Stainless steel
Hysteresis	0.03% F.S. Alloy steel / 0.05% F.S. Stainless steel
Repeatability	0.03% F.S. Alloy steel / 0.05% F.S. Stainless steel
Creep (30min)	0.03% F.S. Alloy steel / 0.05% F.S. Stainless steel
Temp. effect on output	0.025% F.S. / 10°C
Temp. effect on zero	0.025% F.S. / 10°C
Input impedance	385 ± 10Ω
Output impedance	350 ± 5Ω
Insulation	≥5000MΩ/ 100VDC
Recommended excitation	10V
Maximum excitation	15V
Compensated temp. range	-10 ~ 60°C
Operation temp. range	-20 ~ 80°C
Safe overload	150% F.S.
Ultimate overload	200% F.S.
Cable size	Ø5 × 6000 mm
Protection class	IP67
Cable color code	Input: Red(+) Black(-); Output: Green(+) White(-);



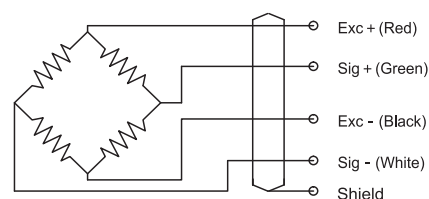
Features & Applications

- Shear beam
- Made of stainless steel or alloy steel
- Long-term stability and high side load tolerance
- Max. capacity: up to 10t
- Mainly used for floor scales, vehicle-test line, hopper scales, platform and pallet scales

Load Direction



Schematic Wiring Diagram



Note: Cable shield is not connected to element.