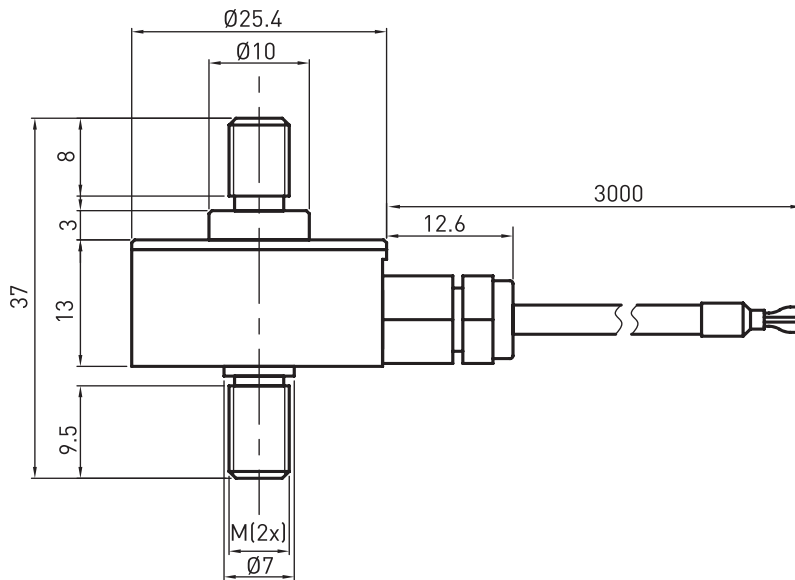


### Size and Capacity



CAP (kg)	SIZE(mm)	M	Material	Weight
5/10/15/20/30/50		M5	Stainless steel	0.1kg
60/100		M6		

### Technical Parameters

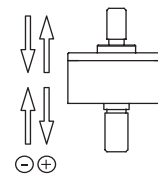
Specifications	Technique
Rated output	2.0± 10% mV/V
Zero balance	±2% F.S.
Non-linearity	0.5% F.S.
Hysteresis	0.5% F.S.
Repeatability	0.25% F.S.
Temp. effect on output	0.2% F.S. / 10°C
Temp. effect on zero	0.2% F.S. / 10°C
Input impedance	700 ± 30 Ω
Output impedance	700 ± 5 Ω
Insulation	≥5000MΩ / 100VDC
Recommended excitation	10V
Maximum excitation	15V
Compensated temp. range	-10 ~ 60°C
Operation temp. range	-20 ~ 80°C
Safe overload	120% F.S.
Ultimate overload	200% F.S.
Cable size	Ø3 × 3000 mm
Protection class	IP65
Cable color code	Input: Red(+) Black(-); Output: Green(+) White(-);



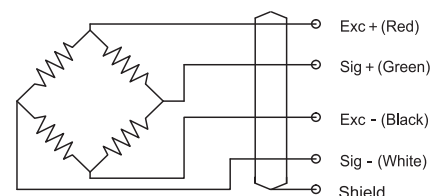
### Features & Applications

- Tension and compression application
- Low profile, IP65 protection
- Made of stainless steel
- Mainly used for testing machine, miniature tension and pressure test equipment, such as lamination machine, riveting machine, welding machine

### Load Direction



### Schematic Wiring Diagram



Note: Cable shield is not connected to element.