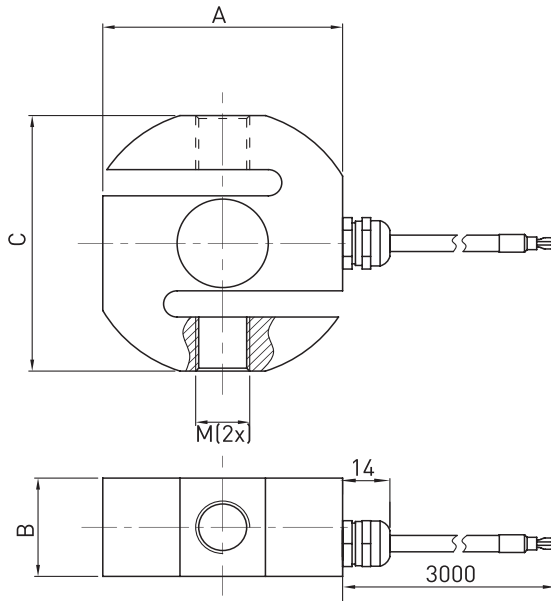


Size and Capacity



CAP (kg)	SIZE(mm)				Material	Weight
	A	B	C	M		
50/100/150/200/300/500	52.5	22	59.5	M12	Stainless steel Alloy steel option	0.65kg
1000/1500/2000/2500	71	30	78.0	M16*2		1.5kg
3000/5000	91	45	90.0	M24*2		2.9kg
7500	163	50	163	M30*2		10.8kg

Technical Parameters

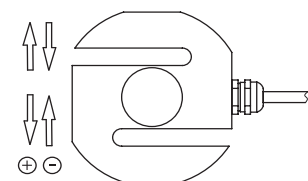
Specifications	Technique	
Rated output	2.0±5% mV/V	
Zero balance	± 2% F.S.	
Non-linearity	0.03% F.S.	0.05% F.S.
Hysteresis	0.03% F.S.	0.05% F.S.
Repeatability	0.03% F.S.	0.05% F.S.
Creep (30min)	0.05% F.S.	0.05% F.S.
Temp. effect on output	0.025% F.S. / 10°C	
Temp. effect on zero	0.025% F.S. / 10°C	
Input impedance	385 ± 10Ω	
Output impedance	350 ± 5Ω	
Insulation	≥5000MΩ / 100VDC	
Recommended excitation	10V	
Maximum excitation	15V	
Compensated temp. range	-10 ~ 60°C	
Operation temp. range	-20 ~ 80°C	
Safe overload	150% F.S.	
Ultimate overload	200% F.S.	
Cable size	Ø5 × 3000 mm	
Protection class	IP65 (≤500kg), IP67 (>500kg)	
Cable color code	Input: Red(+) Black(-); Output: Green(+) White(-);	



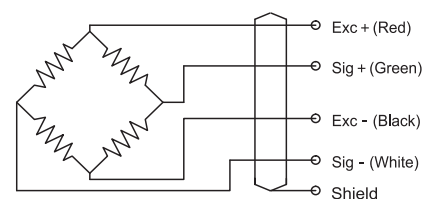
Features & Applications

- Tension and compression application
- Made of stainless steel or alloy steel
- Compact structure, easy to install
- Used in mechanical and electrical integration scales, crane scales, hopper scales, packaging scales, catch weigher and various special application scales and industrial measurement systems

Load Direction



Schematic Wiring Diagram



Note: Cable shield is not connected to element.