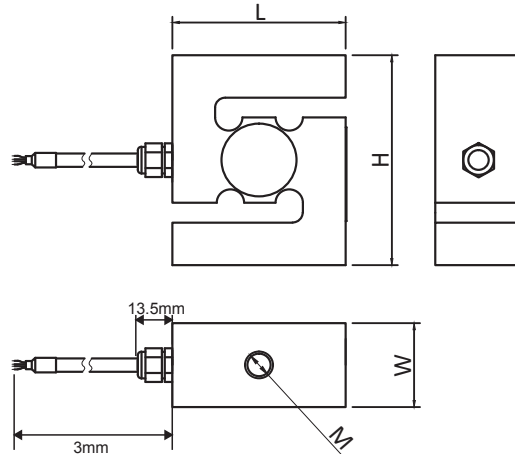


# F2802



## Size and Capacity



## Features & Applications

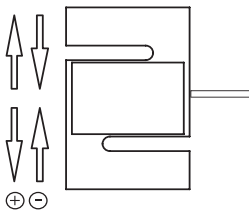
- Tension and compression application
- Made of stainless steel or alloy steel
- Max. capacity: 5t
- Mainly used for testing instruments, pull and push dynamometer, hopper scales, crane scales and industrial weighing system

CAP (kg) \ SIZE(mm)	H	L	W	M	Cable	Material	Weight
50	63.5	50.8	25.4	M8	Ø5	Stainless steel Alloy steel option	0.3kg
100/200	76.2	50.8	25.4	M12	Ø5		0.5kg
500/1000	87.3	57.2	31	M12			0.5kg
2000/3000	100	69.8	36.5	M24*2			1.3kg
5000	114.3	76.2	36.5	M24*2			1.4kg

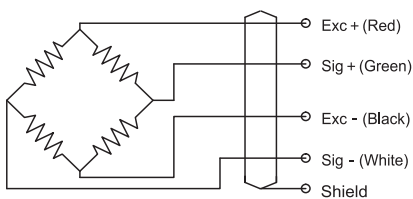
## Technical Parameters

Specifications	Technique			
Rated output	2.0 ± 5% mV/V			
Zero balance	± 2% F.S.			
Non-linearity	0.03% F.S.	Alloy steel	Stainless steel	
Hysteresis	0.03% F.S.			0.05% F.S.
Repeatability	0.03% F.S.			0.05% F.S.
Creep (30min)	0.03% F.S.			0.05% F.S.
Temp. effect on output	0.025% F.S. / 10°C			
Temp. effect on zero	0.025% F.S. / 10°C			
Input impedance	385 ± 30Ω			
Output impedance	350 ± 5Ω			
Insulation	≥5000MΩ / 100VDC			
Recommended excitation	10V			
Maximum excitation	15V			
Compensated temp. range	-10 ~ 60°C			
Operation temp. range	-20 ~ 80°C			
Safe overload	150% F.S.			
Ultimate overload	200% F.S.			
Cable size	3000 mm			
Protection class	IP65 (<500kg), IP67 (≥500kg)			
Cable color code	Input: Red(+) Black(-); Output: Green(+) White(-);			

## Load Direction



## Schematic Wiring Diagram



Note: Cable shield is not connected to element.