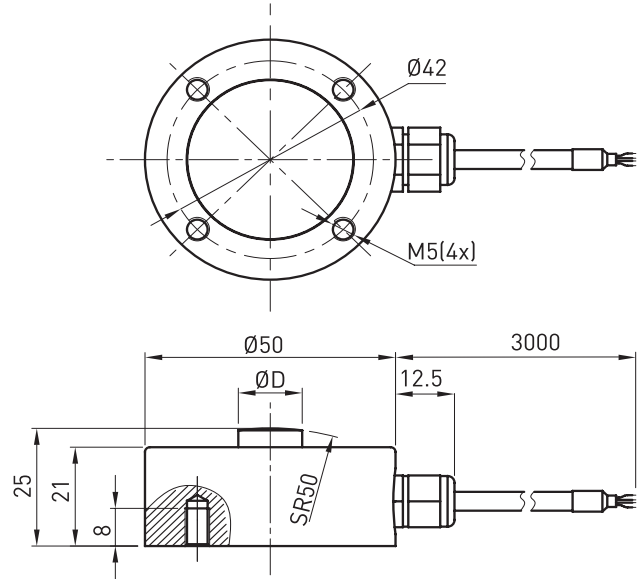


# F1821



## Size and Capacity

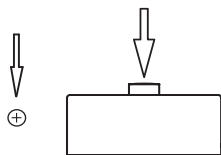


## Features & Applications

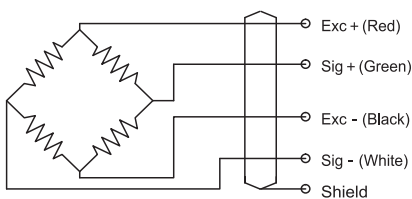
- Stainless steel construction. Fully welded seal with stainless steel cover for hostile environment applications, IP66
- Used in pressing machine, bearing assembly machine
- Transient force measurement of dynamic stamping equipment, hopper scale and tank scale dynamic weight control

CAP (kg)	SIZE(mm)	D	Material	Weight
20/30/50/100/150/200/300/500/1000/1500/2000		13	Stainless Steel	0.4kg
3000/5000		16		
6000/7500/10000		21		

## Load Direction



## Schematic Wiring Diagram



## Technical Parameters

Specifications	Technique
Rated output	1.5 ± 10% mV/V
Zero balance	±3% F.S.
Non-linearity	0.5% F.S.
Hysteresis	0.5% F.S.
Repeatability	0.1% F.S.
Temp. effect on output	0.05% F.S. / 10°C
Temp. effect on zero	0.05% F.S. / 10°C
Input impedance	385±10Ω
Output impedance	350±5Ω
Insulation	≥5000MΩ / 100VDC
Recommended excitation	5 ~ 10V
Maximum excitation	15V
Compensated temp. range	-10 ~ 60°C
Operation temp. range	-20 ~ 80°C
Safe overload	150% F.S.
Ultimate overload	200% F.S.
Cable size	Ø4 × 3000 mm
Protection class	IP66
Cable color code	Input: Red(+) Black(-); Output: Green(+) White(-);

Note: Cable shield is not connected to element.