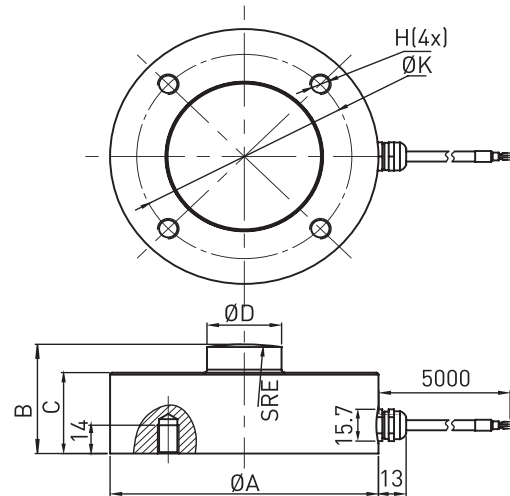


F1811



Size and Capacity



Features & Applications

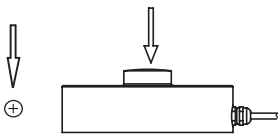
- Low profile pancake load cell
- Made of stainless steel
- IP67, waterproof and moisture-proof
- Compact structure, easy to install
- Various applications such as pressing machine, bearing assembly machine, axle wheel identifying

SIZE(mm) CAP (kg)	A	B	C	D	E	K	H	Material	Weight
250/500/1000/ 2000/3000/ 5000/10000	82	44	32	22	50	68	M8	Stainless steel	1.2kg
20000	100	48	36	28	100	80	M8		1.6kg
30000	126	54	40	35	100	101	M10		3.2kg

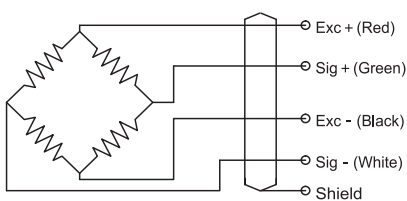
Technical Parameters

Specifications	技术指标/Technique
Rated output	1.5±10% mV/V
Zero balance	± 2% F.S.
Non-linearity	0.1% F.S.
Hysteresis	0.1% F.S.
Repeatability	0.1% F.S.
Creep (30min)	0.1% F.S.
Temp. effect on output	0.05% F.S. / 10°C
Temp. effect on zero	0.05% F.S. / 10°C
Input impedance	750 ± 10 Ω
Output impedance	700 ± 5 Ω
Insulation	≥5000MΩ / 100VDC
Recommended excitation	10V
Maximum excitation	15V
Compensated temp. range	-10 ~ 60°C
Operation temp. range	-20 ~ 80°C
Safe overload	150% F.S.
Ultimate overload	200% F.S.
Cable size	Ø5 × 5000 mm
Protection class	IP67
Cable color code	Input: Red(+) Black(-); Output: Green(+) White(-);

Load Direction



Schematic Wiring Diagram



Note: Cable shield is not connected to element.